

The value of Greater Manchester's green infrastructure for addressing community needs

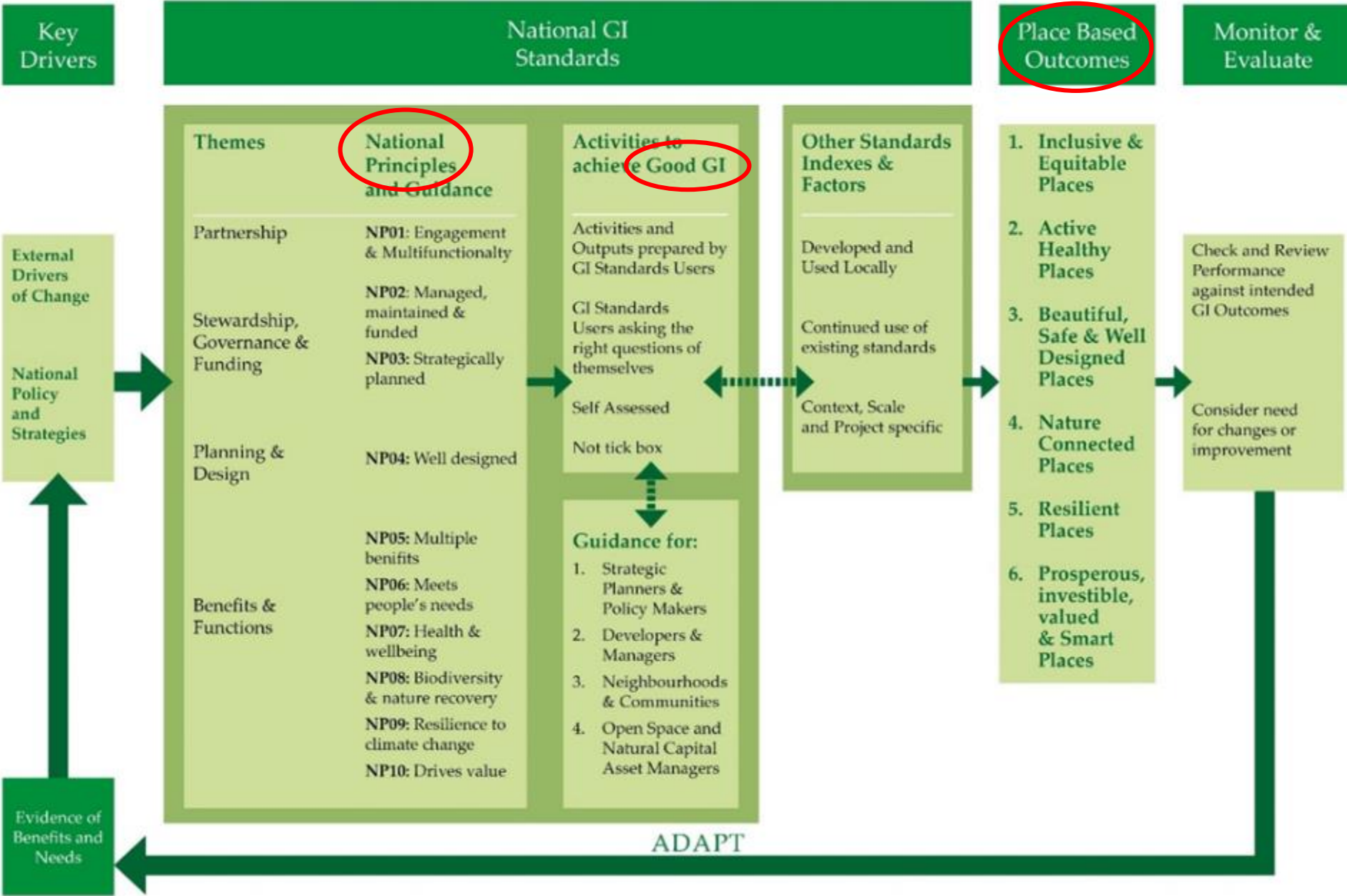


Helen Davies, Principal Consultant
London, 28th-29th October 2019

Agenda

- Background to the project
- Purpose of the project and key outputs
- Community needs mapping
 - Why needed
 - The maps
 - How they'll be used





Draft National Framework of Green Infrastructure Standards

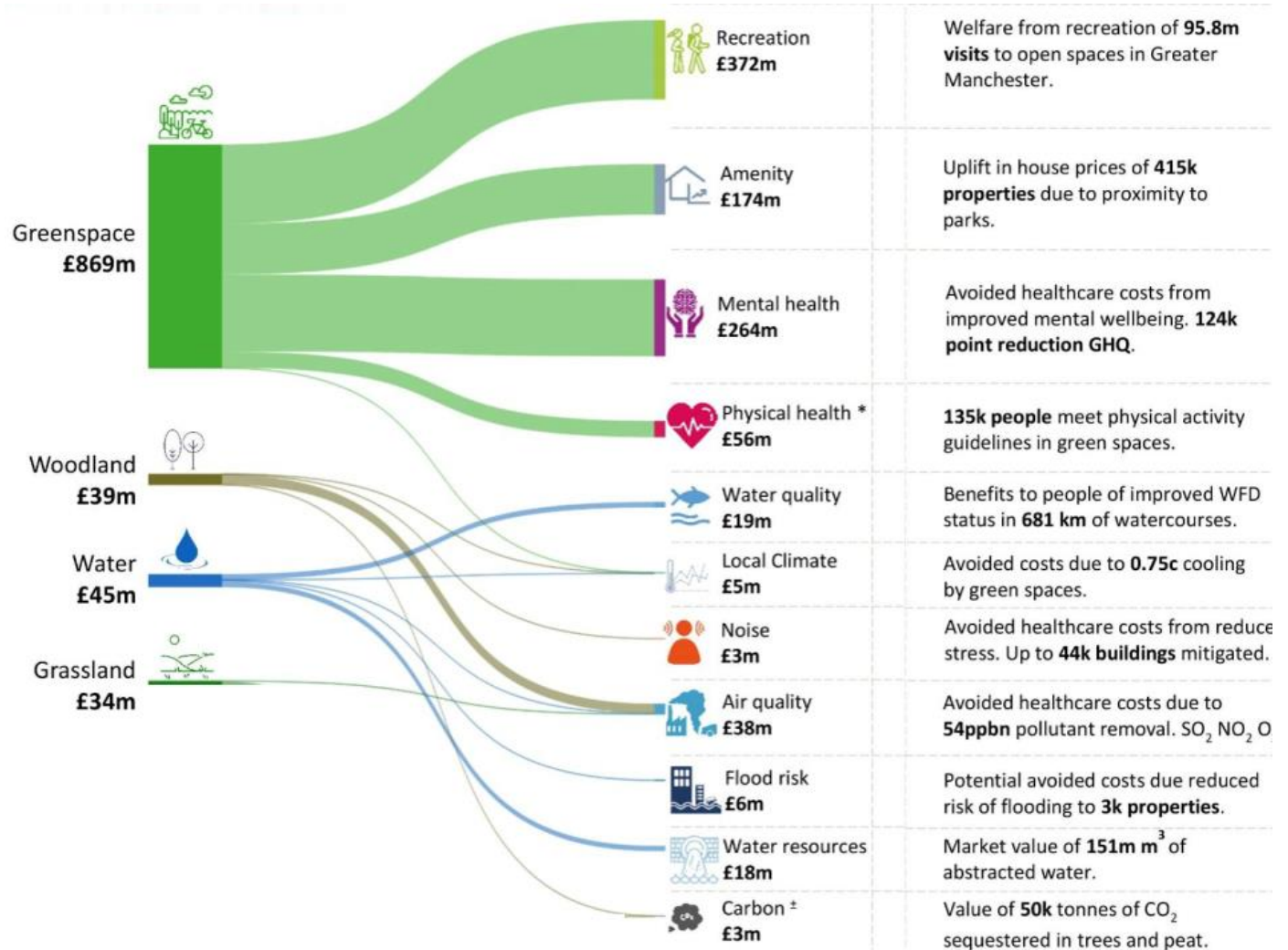
Purpose of the project

- To pioneer the emerging National Framework of Green Infrastructure (GI) Standards in Greater Manchester (GM) by:
 - Undertaking mapping of community needs for GI across GM
 - Informing the GM Spatial Framework (etc)
 - Providing guidance for LPAs to embed this approach into local planning

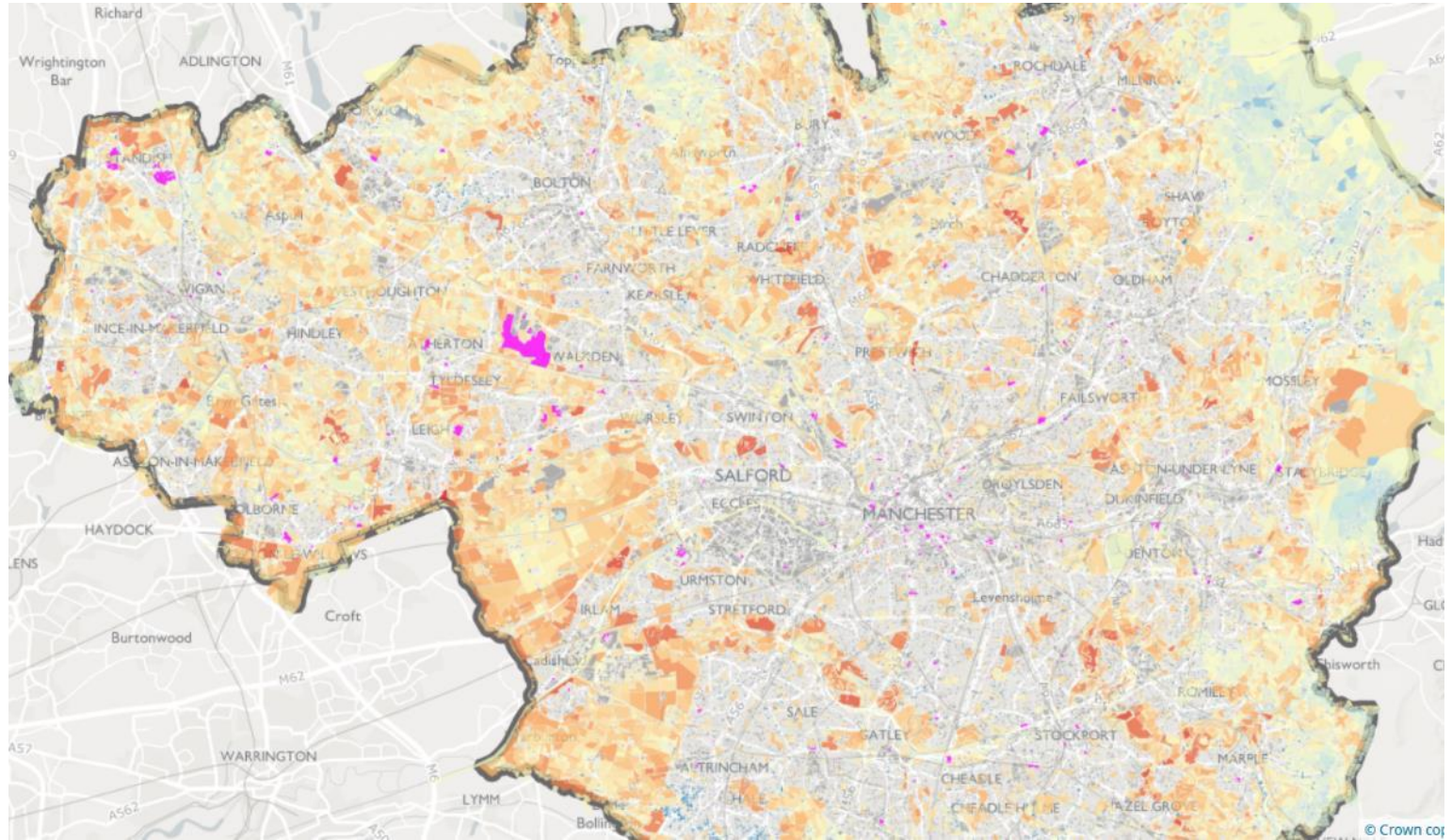
The three key outputs of the project:



Already know monetary value of GM's GI



Already know ES opportunities in GM



6

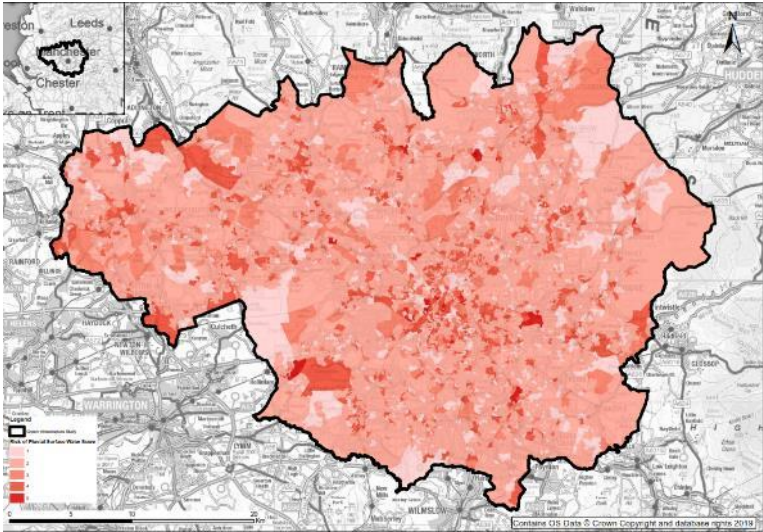
But we don't know...

...**where** there are deficiencies in the **provision** of specific ES benefits to people in need.

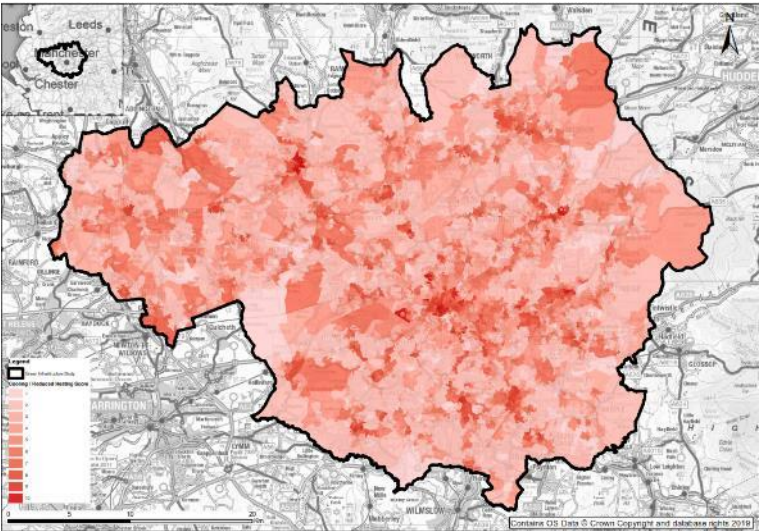
Mapping undertaken, weighted by population, to identify community needs for:

- Cooling / reducing heat
- Decreasing surface water flood risk
- Air quality improvements
- Aesthetic experience
- Recreation opportunities
- Health and wellbeing

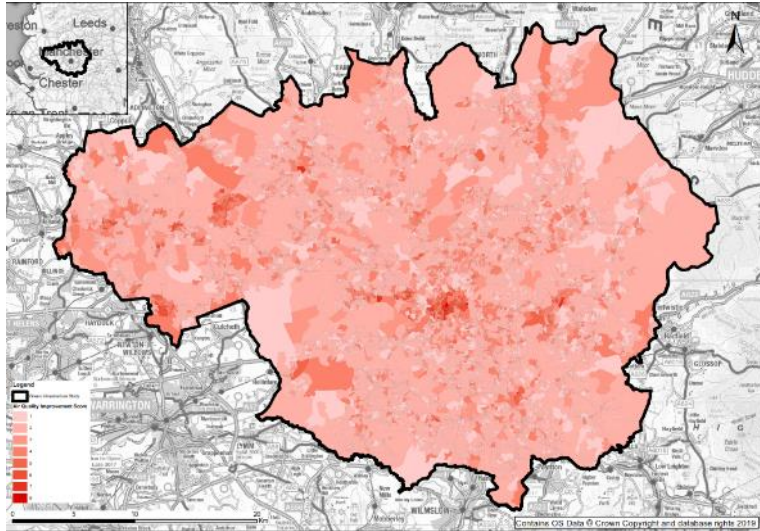
Decreasing surface water flood risk



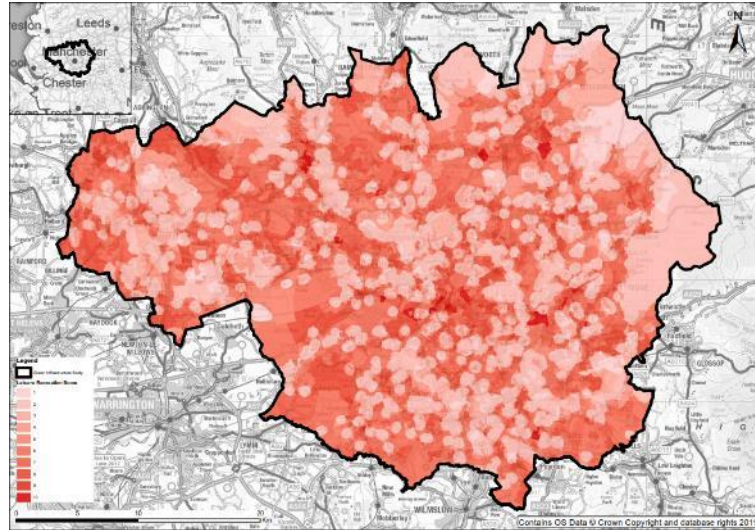
Cooling / reducing heat



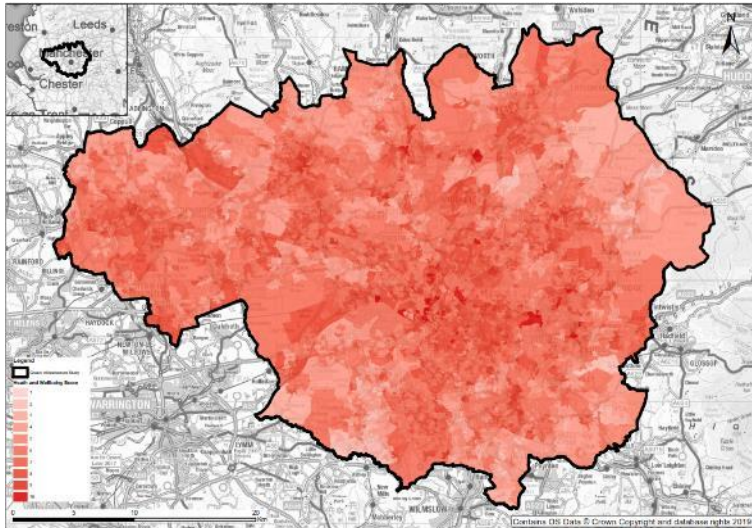
Air quality improvements



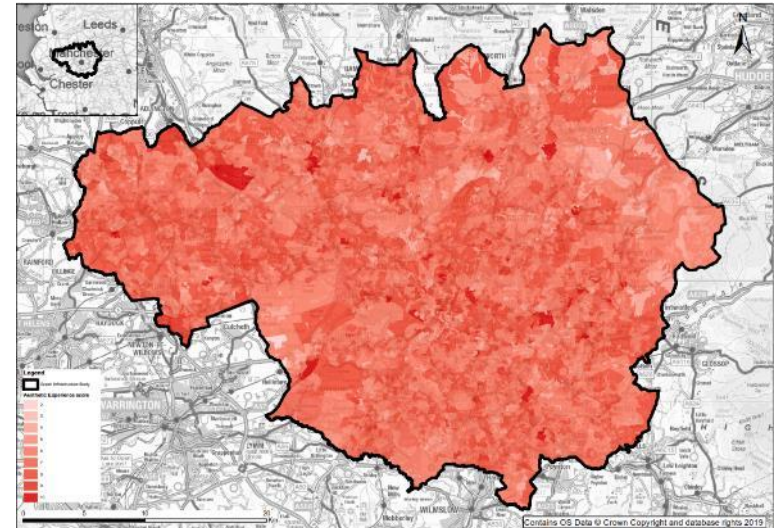
Recreation opportunities



Health and wellbeing



Aesthetic experience



How to use the GM GI spatial evidence base

Zoom into area of interest



Identify need to reduce flooding

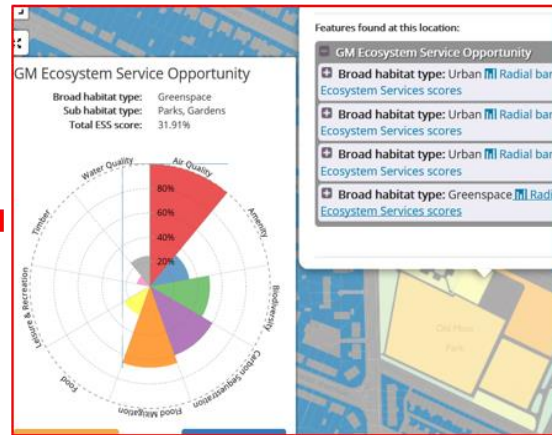


Identify existing green infrastructure



Link into priority GI network

Identify other ES opportunities



Identify flood reduction opportunity



Any questions?

Helen.Davies2@wsp.com